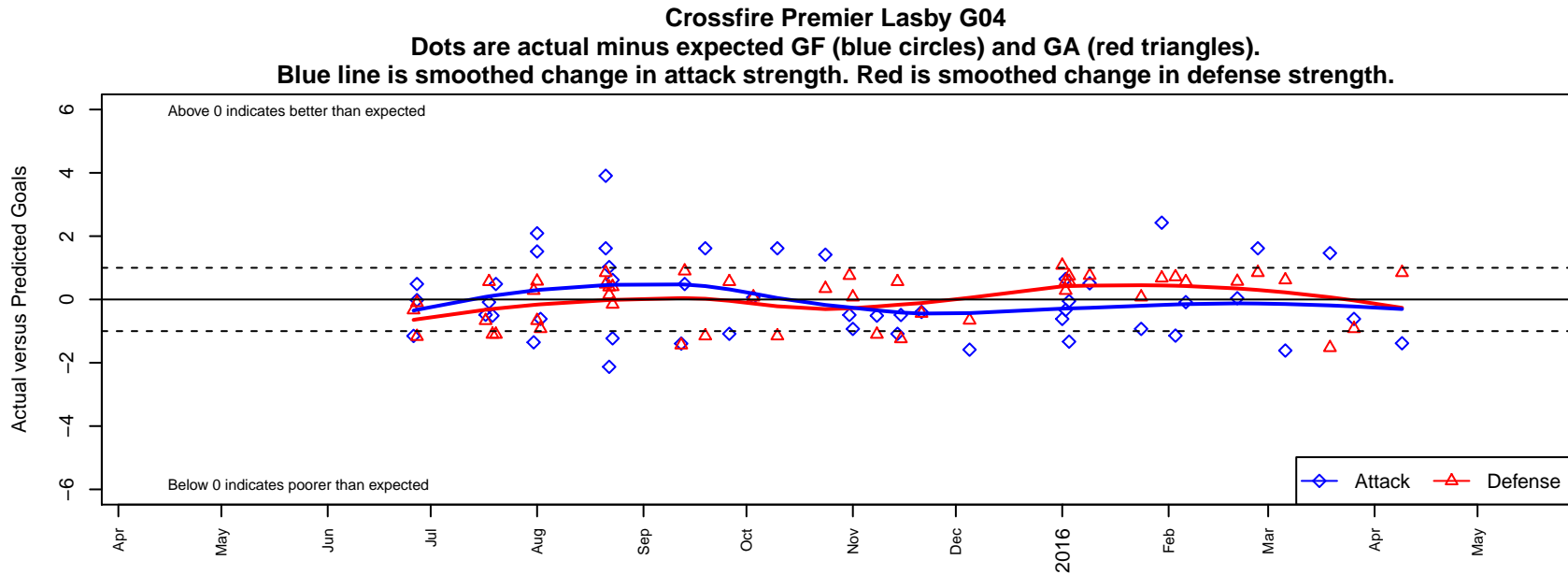


Crossfire Premier Lasby G04

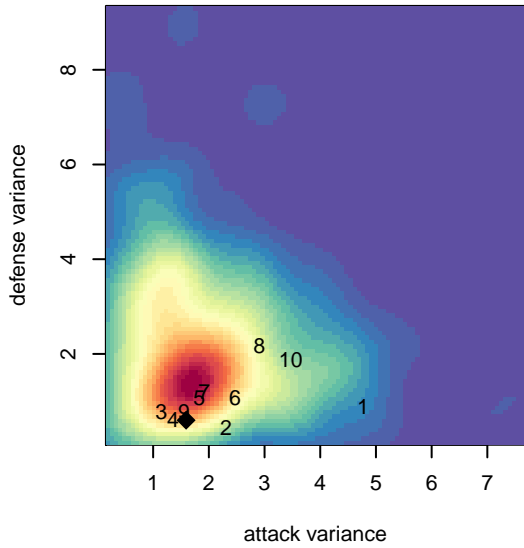
Crossfire Premier
 Redmond, WA
 G04 total strength=602
 attack=0.36 defense=0.69
 fall league = RCL G04 Div 3
 spr league = Win RCL G04 Div 3
 notes= C--; Lasby 2015

alt names used:
 CROSSFIRE PREMIER G04 - C (WA)
 CROSSFIRE PREMIER G04 - C (WA)
 Crossfire Premier G04 C
 Crossfire Premier, GU11C-Lasby
 CROSSFIRE PREMIER GU11C (WA)
 Crossfire GU11C
 Crossfire Premier G04 C
 Crossfire Premier G04 C

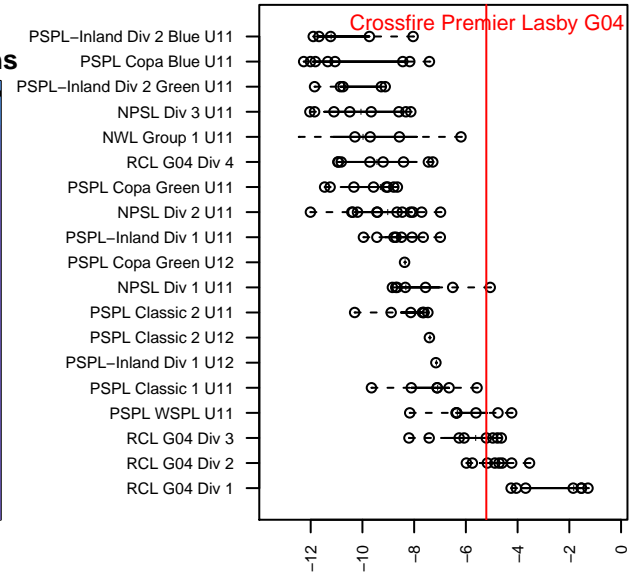
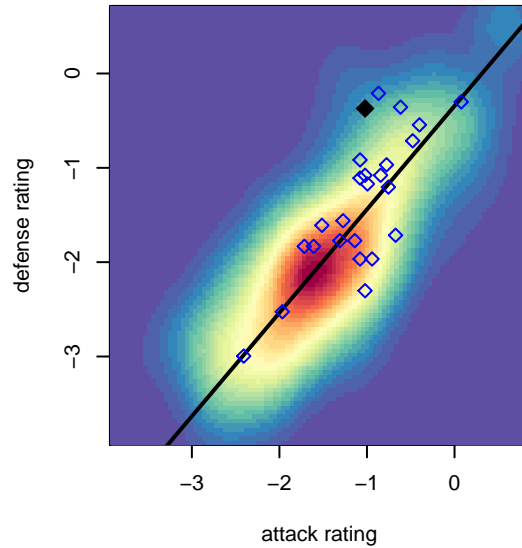
Venues played:
 2015 Rainier Challenge Copa U11
 2015 Nike Crossfire Challenge Silver 9v9 U11
 2015 WA Rush Cup G11 Silver U11
 2015 REDAPT Cup Silver 9v9 U11
 2015 RCL G04 Div 3
 2015 PacNW Winter Classic Premier II U11
 2015 Win RCL G04 Div 3
 2015 WYS Presidents Cup G04 Division 2



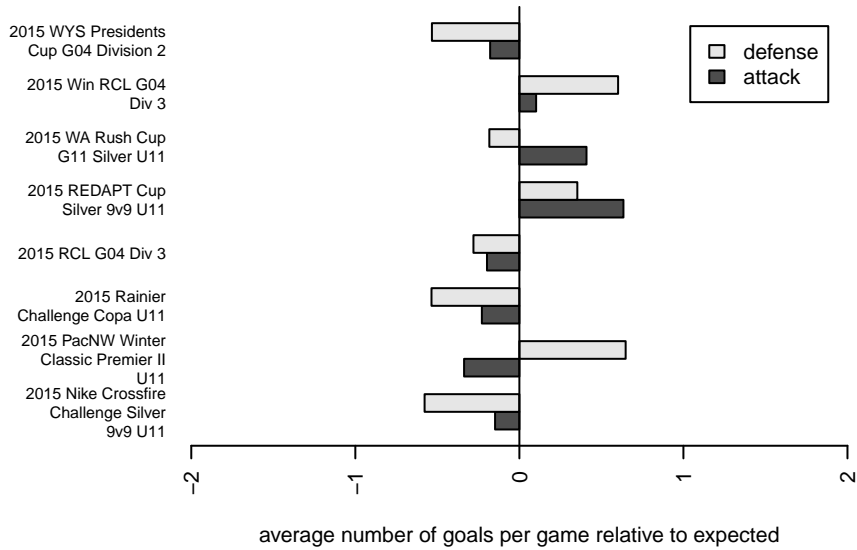
**attack and defense variance (black dot)
relative to other teams
and top 10 in region**



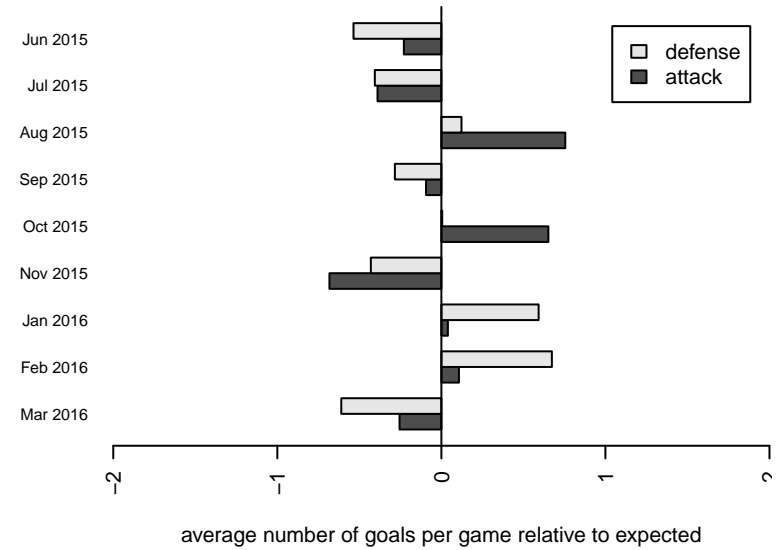
**attack and defense rating
relative to others at age
and all opponents in last 13 months**



Performance relative to 13 month average



Performance relative to 13 month average



| date | home | | away | | venue | pred.home | pred.away |
|------------|-------------------------------|---|-------------------------------|---|--|-----------|-----------|
| 2016-04-09 | Crossfire Premier Lasby G04 | 0 | FWFC Blue G04 | 0 | 2015 WYS Presidents Cup G04 Division 2 | 1.38 | 0.85 |
| 2016-03-26 | WPFC B G04 | 2 | Crossfire Premier Lasby G04 | 0 | 2015 WYS Presidents Cup G04 Division 2 | 1.08 | 0.62 |
| 2016-03-19 | Seattle United Samba G04 | 3 | Crossfire Premier Lasby G04 | 2 | 2015 WYS Presidents Cup G04 Division 2 | 1.48 | 0.54 |
| 2016-03-06 | Crossfire Premier Lasby G04 | 0 | Eastside FC Grey G04 | 0 | 2015 Win RCL G04 Div 3 | 1.61 | 0.62 |
| 2016-02-27 | Crossfire Premier Lasby G04 | 3 | FWFC Blue G04 | 0 | 2015 Win RCL G04 Div 3 | 1.38 | 0.85 |
| 2016-02-21 | Crossfire Premier Lasby G04 | 1 | Seattle United Nova G04 | 0 | 2015 Win RCL G04 Div 3 | 0.96 | 0.57 |
| 2016-02-06 | RV Slammers Orange G04 | 0 | Crossfire Premier Lasby G04 | 1 | 2015 Win RCL G04 Div 3 | 0.56 | 1.09 |
| 2016-02-03 | Crossfire Premier Lasby G04 | 0 | FC Alliance A G04 | 0 | 2015 Win RCL G04 Div 3 | 1.14 | 0.71 |
| 2016-01-30 | WPFC C G04 | 0 | Crossfire Premier Lasby G04 | 5 | 2015 Win RCL G04 Div 3 | 0.67 | 2.58 |
| 2016-01-24 | Three Rivers SC Black RCL G04 | 1 | Crossfire Premier Lasby G04 | 0 | 2015 Win RCL G04 Div 3 | 1.07 | 0.93 |
| 2016-01-09 | Crossfire Premier Lasby G04 | 1 | Eastside FC Blue G04 | 0 | 2015 Win RCL G04 Div 3 | 0.49 | 0.76 |
| 2016-01-03 | Harbor Premier Green G04 | 0 | Crossfire Premier Lasby G04 | 1 | 2015 PacNW Winter Classic Premier II U11 | 0.74 | 1.05 |
| 2016-01-03 | Crossfire Premier Lasby G04 | 0 | ISC Gunners A G05 | 0 | 2015 PacNW Winter Classic Premier II U11 | 1.33 | 0.57 |
| 2016-01-02 | Crossfire Premier Lasby G04 | 1 | ISC Gunners A G05 | 0 | 2015 PacNW Winter Classic Premier II U11 | 1.33 | 0.57 |
| 2016-01-02 | WA Rush Nero G04 | 0 | Crossfire Premier Lasby G04 | 5 | 2015 PacNW Winter Classic Premier II U11 | 0.28 | 4.35 |
| 2016-01-01 | Crossfire Premier Lasby G04 | 0 | WPFC B G04 | 0 | 2015 PacNW Winter Classic Premier II U11 | 0.62 | 1.08 |
| 2015-12-05 | Harbor Premier White G04 | 1 | Crossfire Premier Lasby G04 | 1 | 2015 RCL G04 Div 3 | 0.34 | 2.59 |
| 2015-11-21 | Blackhills FC Black G04 | 1 | Crossfire Premier Lasby G04 | 2 | 2015 RCL G04 Div 3 | 0.56 | 2.39 |
| 2015-11-15 | Crossfire Premier Lasby G04 | 0 | Eastside FC Blue G04 | 2 | 2015 RCL G04 Div 3 | 0.49 | 0.76 |
| 2015-11-14 | Crossfire Premier Lasby G04 | 0 | RV Slammers Orange G04 | 0 | 2015 RCL G04 Div 3 | 1.09 | 0.56 |
| 2015-11-08 | WA Rush G04 | 2 | Crossfire Premier Lasby G04 | 0 | 2015 RCL G04 Div 3 | 0.90 | 0.51 |
| 2015-11-01 | Three Rivers SC Black RCL G04 | 1 | Crossfire Premier Lasby G04 | 0 | 2015 RCL G04 Div 3 | 1.07 | 0.93 |
| 2015-10-31 | Eastside FC Blue G04 | 0 | Crossfire Premier Lasby G04 | 0 | 2015 RCL G04 Div 3 | 0.76 | 0.49 |
| 2015-10-24 | Crossfire Premier Lasby G04 | 4 | Harbor Premier White G04 | 0 | 2015 RCL G04 Div 3 | 2.59 | 0.34 |
| 2015-10-10 | Crossfire Premier Lasby G04 | 3 | FWFC Blue G04 | 2 | 2015 RCL G04 Div 3 | 1.38 | 0.85 |
| 2015-10-03 | Crossfire Premier Lasby G04 | 1 | Three Rivers SC Black RCL G04 | 1 | 2015 RCL G04 Div 3 | 0.93 | 1.07 |
| 2015-09-26 | RV Slammers Orange G04 | 0 | Crossfire Premier Lasby G04 | 0 | 2015 RCL G04 Div 3 | 0.56 | 1.09 |
| 2015-09-19 | FWFC Blue G04 | 2 | Crossfire Premier Lasby G04 | 3 | 2015 RCL G04 Div 3 | 0.85 | 1.38 |

| date | home | | away | | venue | pred.home | pred.away |
|------------|-----------------------------|---|-----------------------------|---|--|-----------|-----------|
| 2015-09-13 | Crossfire Premier Lasby G04 | 1 | WA Rush G04 | 0 | 2015 RCL G04 Div 3 | 0.51 | 0.90 |
| 2015-09-12 | Crossfire Premier Lasby G04 | 1 | Blackhills FC Black G04 | 2 | 2015 RCL G04 Div 3 | 2.39 | 0.56 |
| 2015-08-23 | NPSA Titans Navy G04 | 0 | Crossfire Premier Lasby G04 | 1 | 2015 REDAPT Cup Silver 9v9 U11 | 0.40 | 2.23 |
| 2015-08-23 | FWFC Blue G04 | 1 | Crossfire Premier Lasby G04 | 2 | 2015 REDAPT Cup Silver 9v9 U11 | 0.85 | 1.38 |
| 2015-08-22 | Crossfire Premier Lasby G04 | 7 | RV Slammers White G04 | 0 | 2015 REDAPT Cup Silver 9v9 U11 | 5.98 | 0.15 |
| 2015-08-22 | Crossfire Premier Lasby G04 | 0 | Seattle United W Blue G04 | 0 | 2015 REDAPT Cup Silver 9v9 U11 | 2.13 | 0.39 |
| 2015-08-21 | Crossfire Premier Lasby G04 | 7 | Seattle Celtic White G04 | 0 | 2015 REDAPT Cup Silver 9v9 U11 | 3.09 | 0.48 |
| 2015-08-21 | Crossfire Premier Lasby G04 | 3 | FWFC Blue G04 | 0 | 2015 REDAPT Cup Silver 9v9 U11 | 1.38 | 0.85 |
| 2015-08-02 | WPFC B G04 | 2 | Crossfire Premier Lasby G04 | 0 | 2015 WA Rush Cup G11 Silver U11 | 1.08 | 0.62 |
| 2015-08-01 | Spokane Foxes Platinum G04 | 0 | Crossfire Premier Lasby G04 | 6 | 2015 WA Rush Cup G11 Silver U11 | 0.58 | 3.91 |
| 2015-08-01 | PacNW Blue G04 | 1 | Crossfire Premier Lasby G04 | 4 | 2015 WA Rush Cup G11 Silver U11 | 0.33 | 2.48 |
| 2015-07-31 | WA Rush Nero G04 | 0 | Crossfire Premier Lasby G04 | 3 | 2015 WA Rush Cup G11 Silver U11 | 0.28 | 4.35 |
| 2015-07-20 | WA Rush G04 | 2 | Crossfire Premier Lasby G04 | 1 | 2015 Nike Crossfire Challenge Silver 9v9 | 0.90 | 0.51 |
| 2015-07-19 | WA Rush G04 | 2 | Crossfire Premier Lasby G04 | 0 | 2015 Nike Crossfire Challenge Silver 9v9 | 0.90 | 0.51 |
| 2015-07-18 | RV Slammers Orange G04 | 0 | Crossfire Premier Lasby G04 | 1 | 2015 Nike Crossfire Challenge Silver 9v9 | 0.56 | 1.09 |
| 2015-07-17 | PacNW Blue G04 | 1 | Crossfire Premier Lasby G04 | 2 | 2015 Nike Crossfire Challenge Silver 9v9 | 0.33 | 2.48 |
| 2015-06-27 | WPFC A G05 | 2 | Crossfire Premier Lasby G04 | 2 | 2015 Rainier Challenge Copa U11 | 0.83 | 2.02 |
| 2015-06-27 | Crossfire Premier Lasby G04 | 1 | WA Rush G04 | 1 | 2015 Rainier Challenge Copa U11 | 0.51 | 0.90 |
| 2015-06-26 | Crossfire Premier Lasby G04 | 0 | Highline Premier Blue G04 | 1 | 2015 Rainier Challenge Copa U11 | 1.15 | 0.67 |